

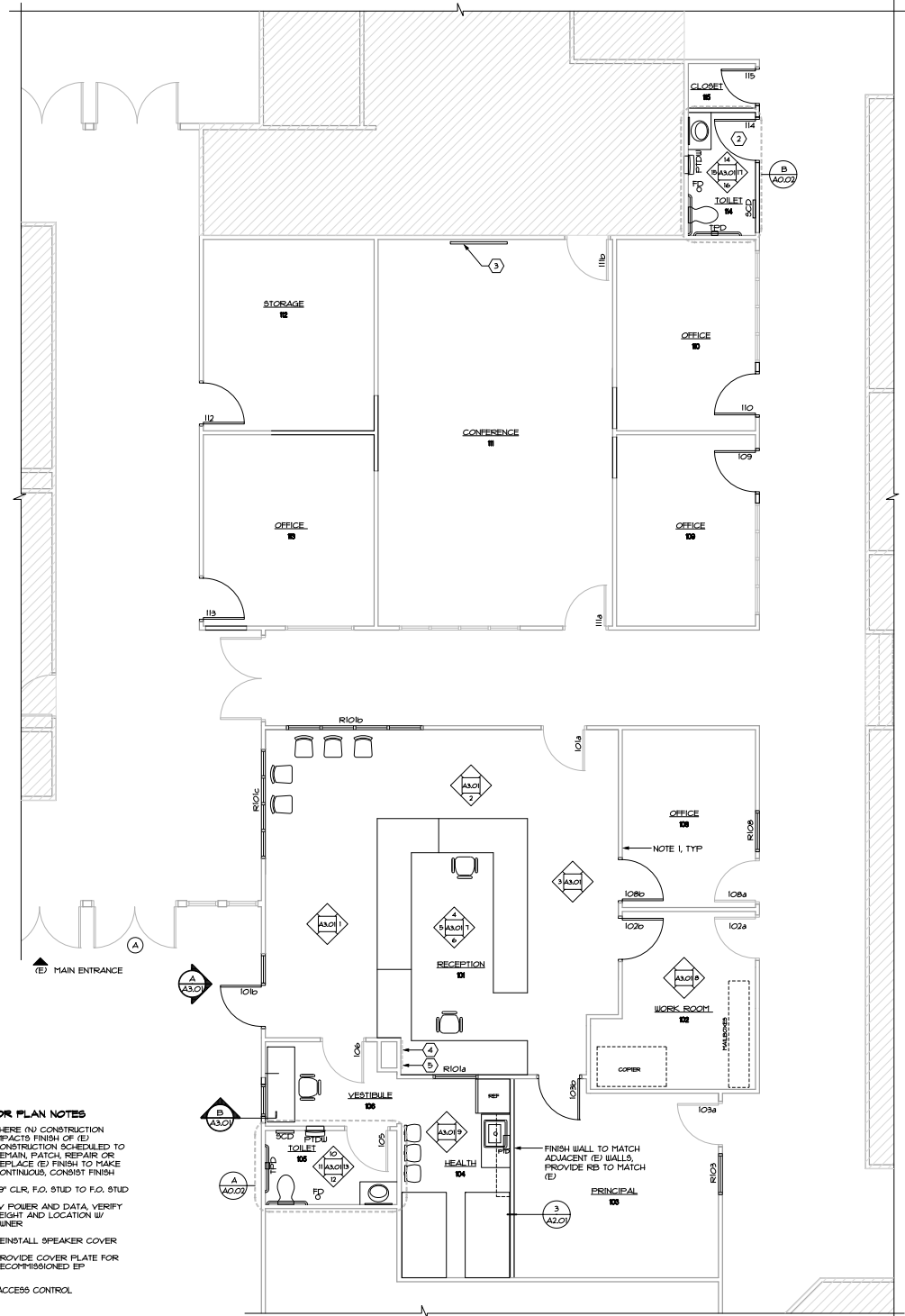
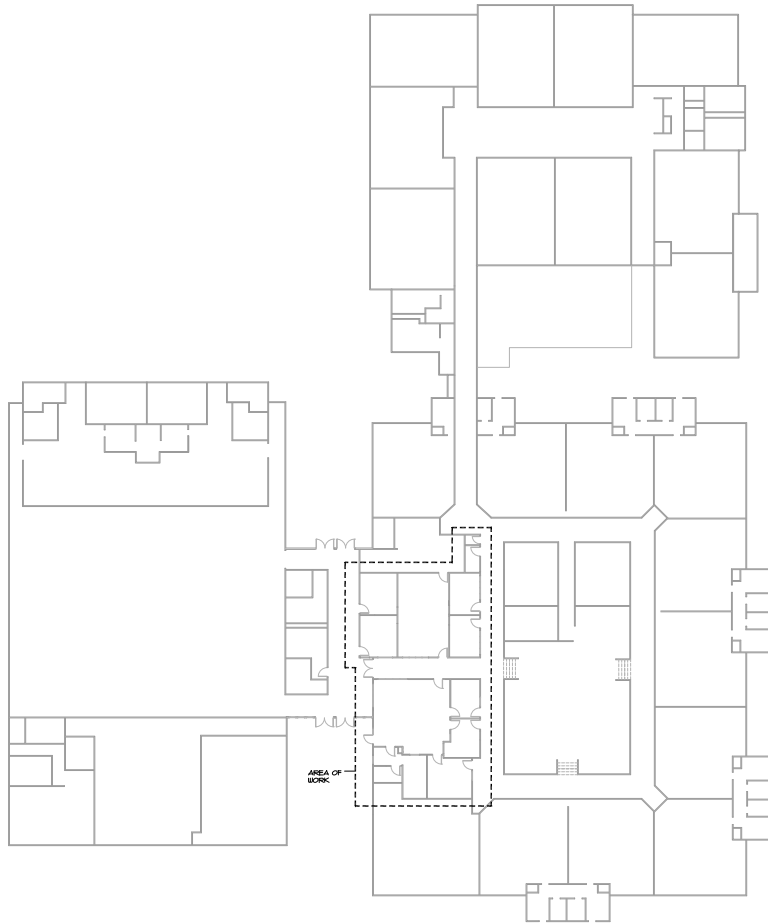
SECURITY AND ENTRANCE IMPROVEMENTS

- Primary School
- Intermediate School
- Middle School

PRIMARY SCHOOL

New Entry and Offices

- New entrance door
- Convert existing classroom into school offices and health room
- Convert existing school offices into conference area
- Accessible toilet room



FLOOR PLAN NOTES

- WHERE (N) CONSTRUCTION IMPACTS FINISH OR (E) CONSTRUCTION SCHEDULED TO REMAIN, PATCH, REPAIR OR REPLACE (E) FINISH TO MAKE CONTIGUOUS, CONSIST FINISH
- 59" CLR, F.O. STUD TO F.O. STUD
- TV POWER AND DATA, VERIFY HEIGHT AND LOCATION W/ OWNER
- REINSTALL SPEAKER COVER
- PROVIDE COVER PLATE FOR DECOMMISSIONED EP
- ACCESS CONTROL

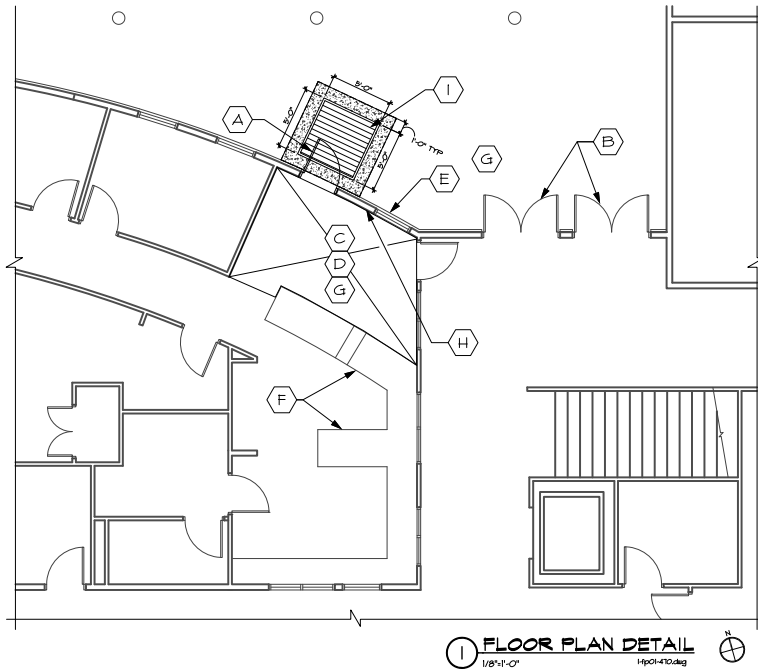
1 FLOOR PLAN
1/4" = 1'-0"
P1p01-410.dwg



INTERMEDIATE SCHOOL

New Entry

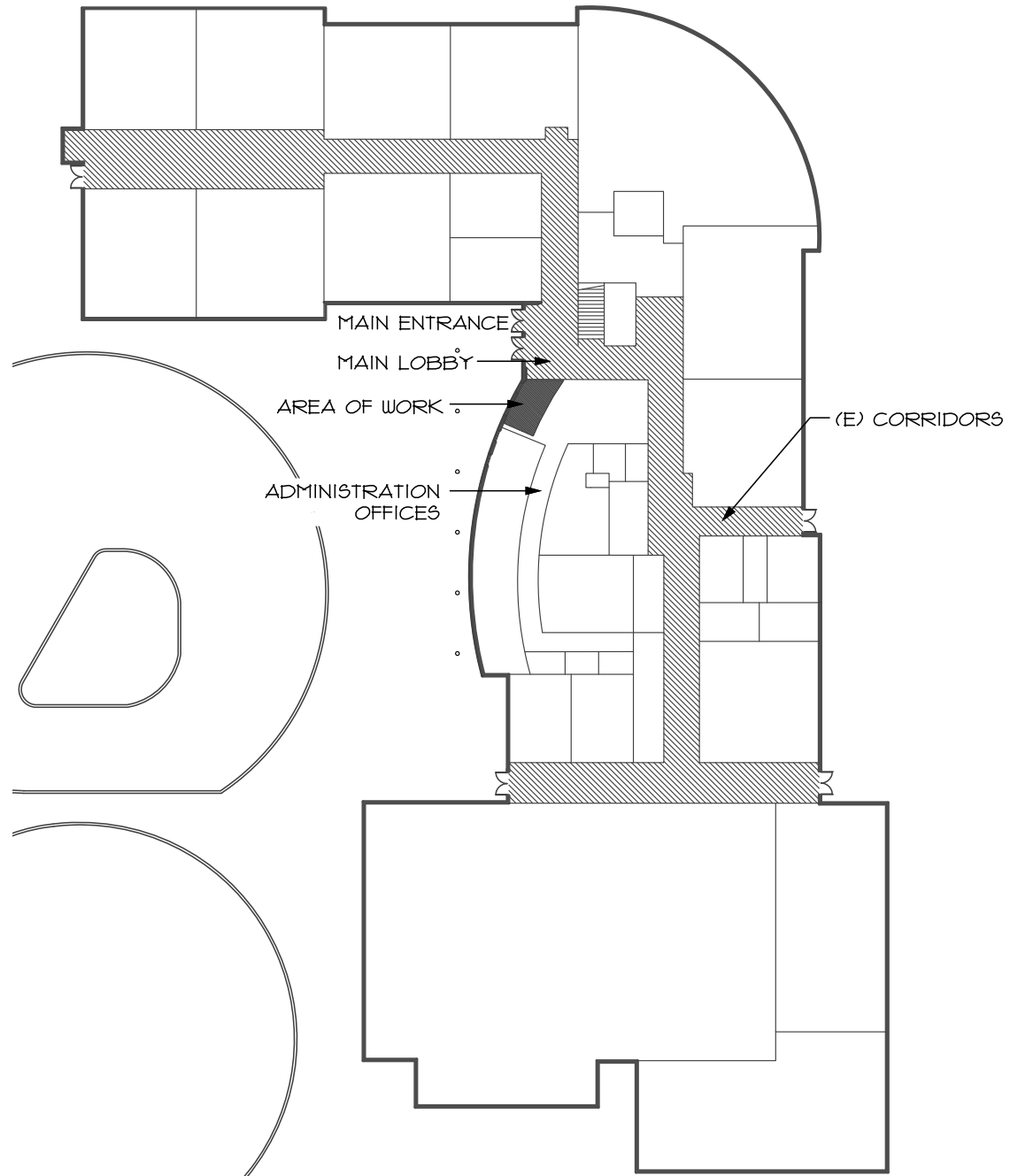
- New entrance door into existing school offices



I FLOOR PLAN DETAIL
1/8"=1'-0" 14201-10.dwg

PLAN NOTES

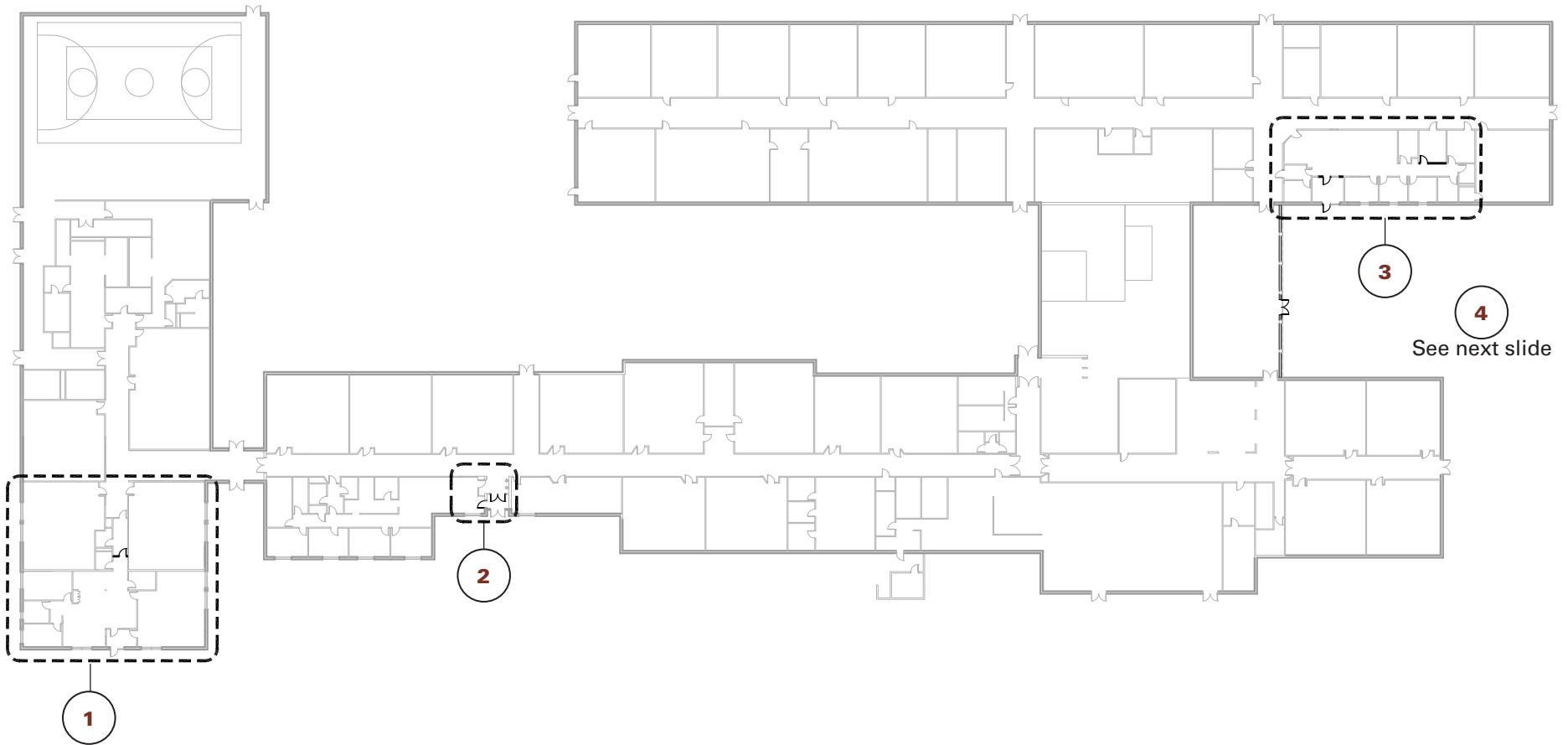
- | | |
|--|---|
| (F) (E) CASEWORK TO REMAIN | (A) 3'-0" X 9'-1/4" HM DOOR, SEE SHEET 6, FIELD VERIFY ROUGH OPENINGS |
| (G) REPAIR/TOUCH-UP ALL INTERIOR & EXTERIOR FINISHES AFFECTED BY CONSTRUCTION, TYPICAL | (B) (E) ENTRANCE DOOR ASSEMBLY TO REMAIN, TYP |
| (H) PAINT FULL EXTENT OF (E) WALL, MATCH (E) COLOR & SHEEN | (C) WOC THIS AREA |
| (I) WALK-OFF GRATE, THIS AREA | (D) MATCH (E) RB, THIS AREA |
| | (E) (E) WINDOW TO REMAIN |

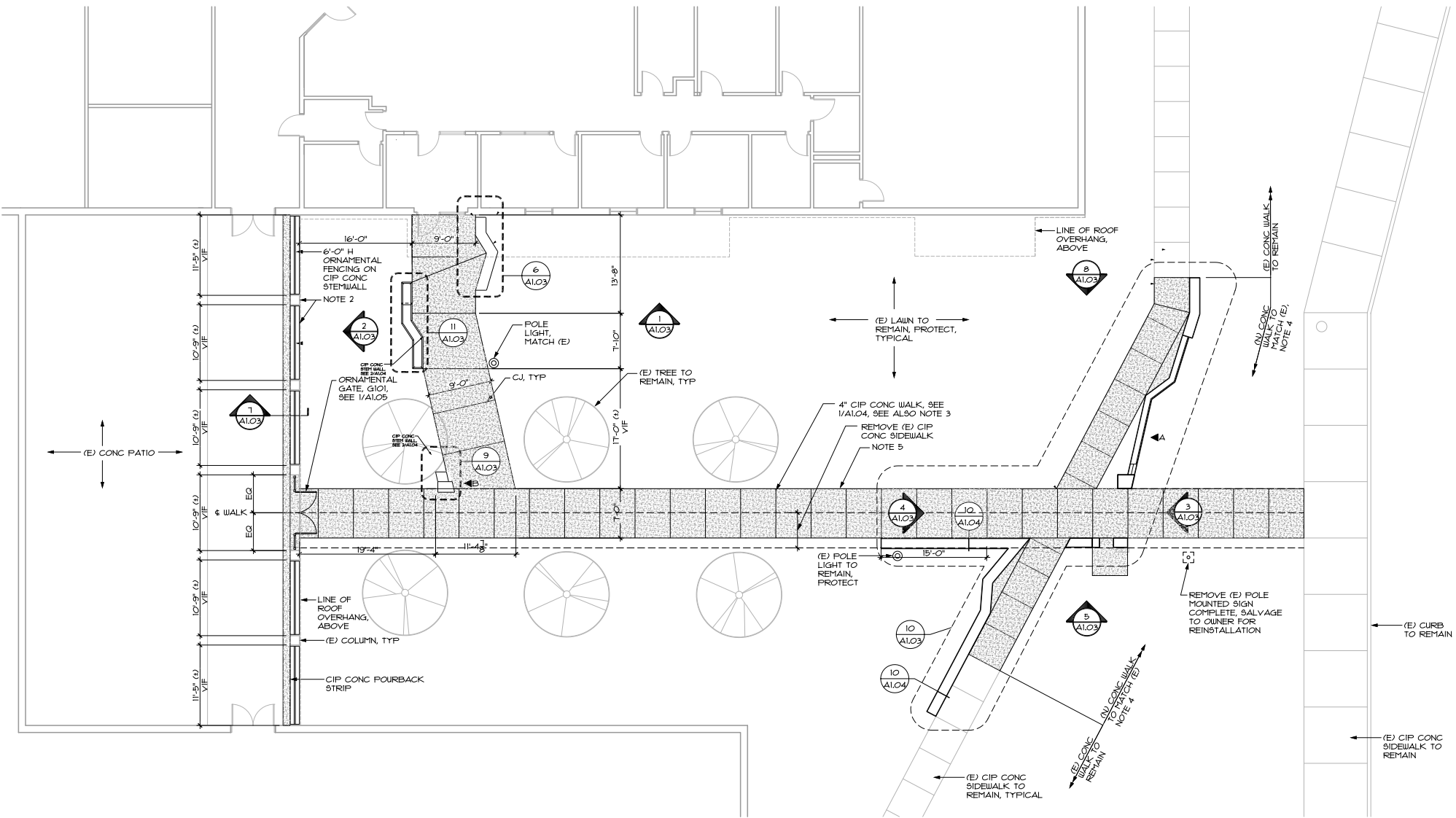


MIDDLE SCHOOL

Lewis River Academy, Intermediate School Entry, District Offices and Middle School Entry

1. Remodel existing District Offices into Lewis River Academy
2. New door at existing Middle School entrance for District Offices and Intermediate School
3. New door at existing High School entrance for Middle School
4. New gateway for Middle School





4 SITE PLAN DETAIL
 1/8" = 1'-0"
 ml-sp01-470

PLAN NOTES

1. RESTORE (E) LANDSCAPING & HARDSCAPING AFFECTED BY CONSTRUCTION
 2. ALIGN F.O. CIP CONC STEM WALL W/ F.O. (E) BRICK MAS COLUMN, TYP
 3. T.O. CONC WALK TO FOLLOW (E) CONTOURS WITH CROSS SLOPE, MAX CROSS SLOPE 2%, V.F. W/ ARCHITECT
 4. REMOVE (E) WALK, PROVIDE (N) TO MATCH
 5. ALIGN E.O. WALK W/ (E) E.O. WALK SCHEDULED TO BE REMOVED
- ▲A - SIGNAGE, SEE 3/A1.03
 ▲B - SIGNAGE, SEE 9/A1.03